

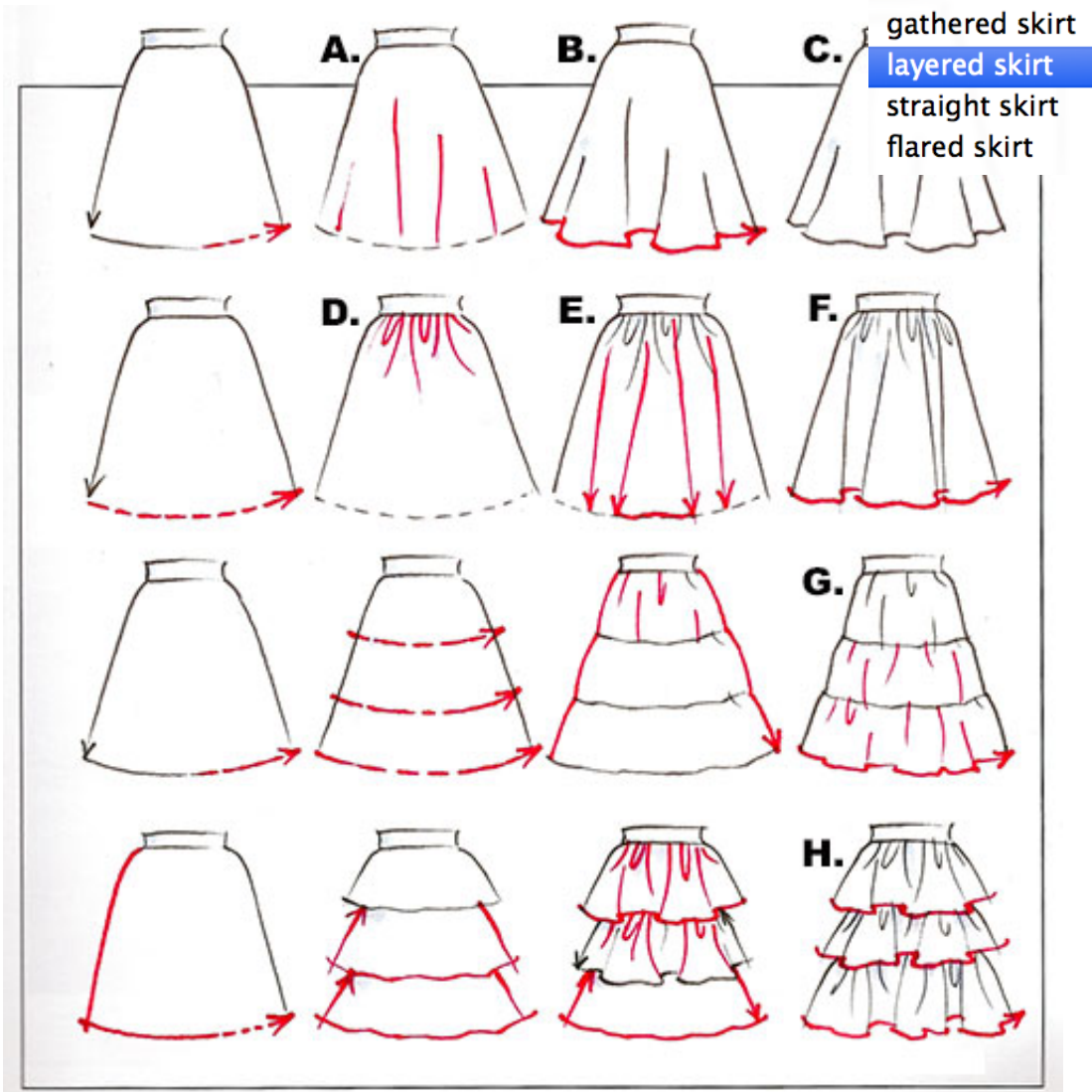
## 2014-2015 Pre-assessment - Fashion Design

Directions: Use your knowledge of fashion design and the images below to answer the following questions.

1. In fashion design what does the term Croquis refer to? (1 point)

- A small flower with white or purple pedals
- A pleat in a woman's skirt line
- A type of texture that is very thick
- A sketch of a blank figure to design cloths onto

2. From the image below, identify the type of skirt: Skirt H is called a **tiered skirt** (1 point)



3. In fashion design what is a Comprehensive Flat? (1 point)

- A drawing of several fashion figures together in different poses
- Drawings of clothing showing the structure of the garment; stitch, seams, etc.
- A drawing of a garment template to cut fabric from
- An elongated figure

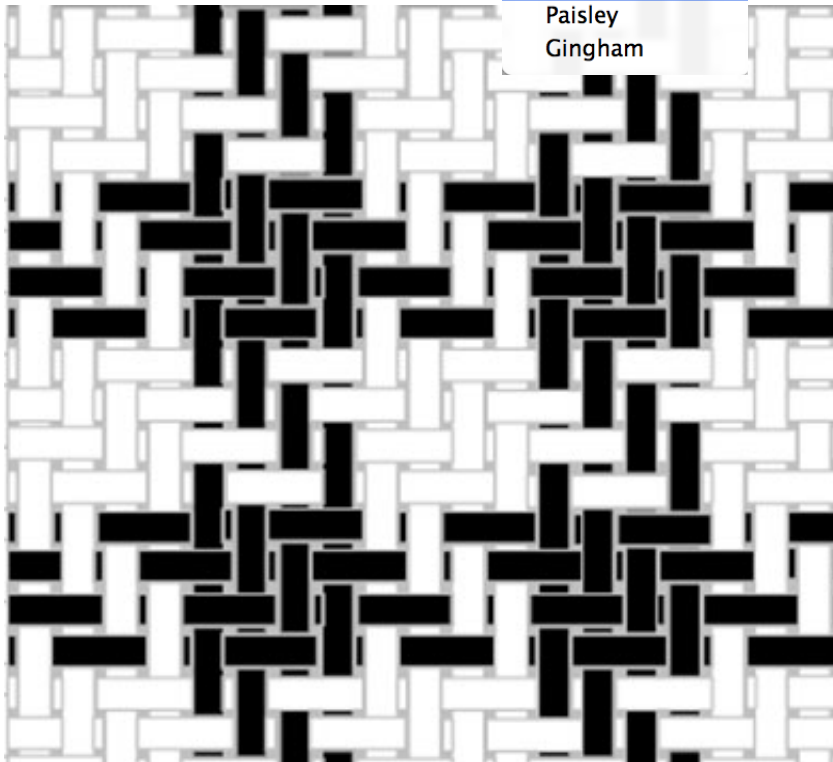
4. Look carefully at the image below.

What pattern is evident in the weave?

Argyle  
Herringbone

**Hound's Tooth** (1 point)

Paisley  
Gingham



5. When referring to the figure what does the term **proportion** mean? (1 point)

- The **relationship** in the size of a figure's parts compared to the whole
- An organization of colors to create harmony and mood in a collection
- The specific type of drawing used to show details of a clothing design
- A common fabric pattern used in fashion

6. Study the magazine advertisement below.

What time period do you think best matches

the design in the advertisement?

- late 1940's
- early 1950's
- 1957
- 1960
- late 1960's

(1 point)



7. Study the image of the pixel character below.

What pattern is evident on his shirt?

- Paisley
- Herringbone
- Hound's Tooth
- Argyle
- Plaid

(1 point)



8. What pattern is represented in the image below?

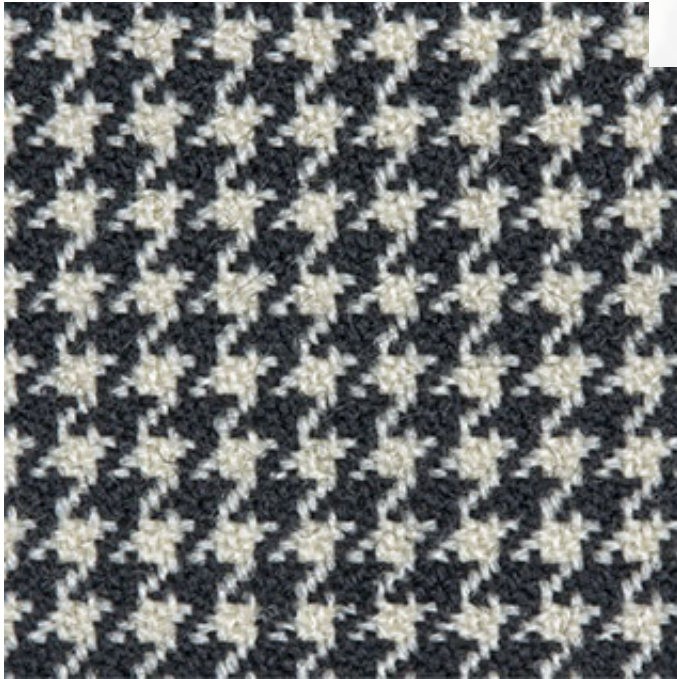
Herringbone

**Hound's Tooth** (1 point)

Argyle

Paisley

Gingham



9. From the image below, identify the type of skirt: Skirt F is called a

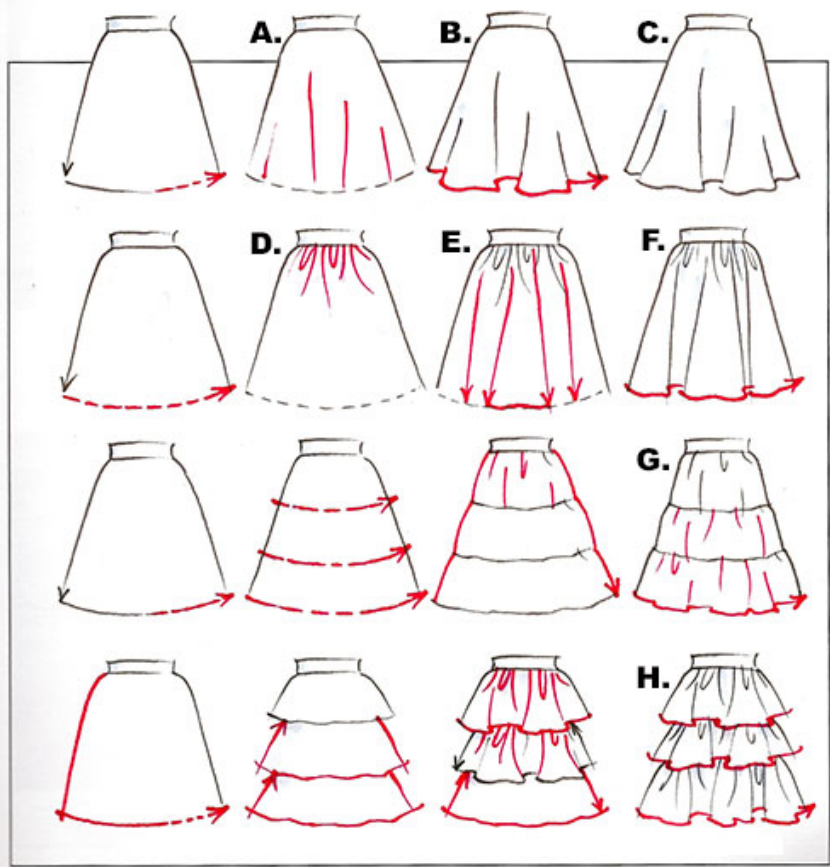
tiered skirt

**gathered skirt** (1 point)

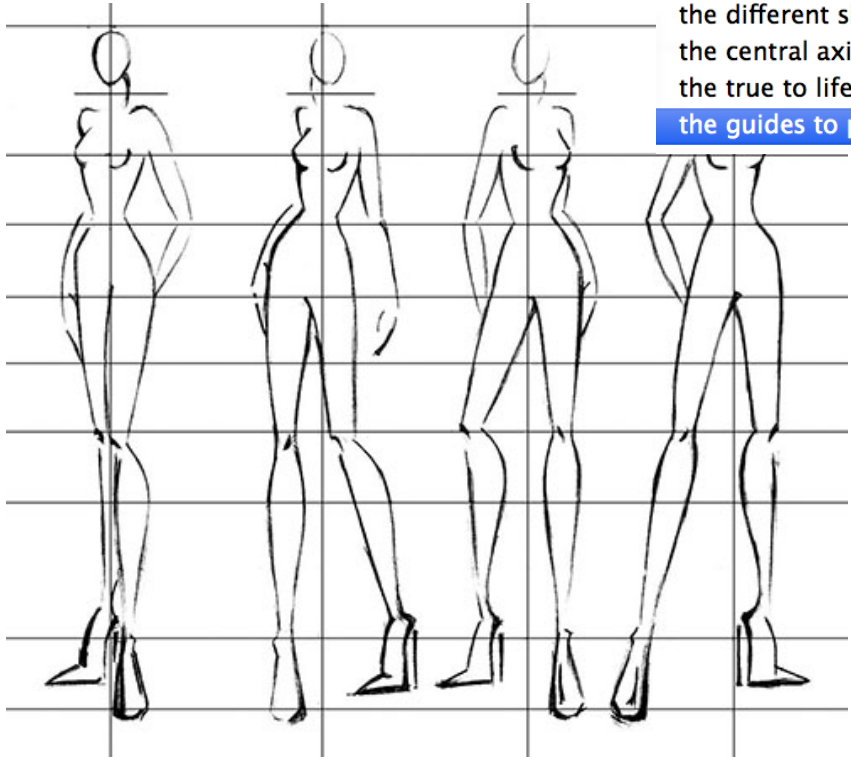
layered skirt

straight skirt

flared skirt



10. In the image below, the horizontal lines represent



- the line of action of the human figure
- the different sizes of a dress design
- the central axis of each figure
- the true to life scale of the human figure
- the guides to proportions of a fashion figure

(1 point)

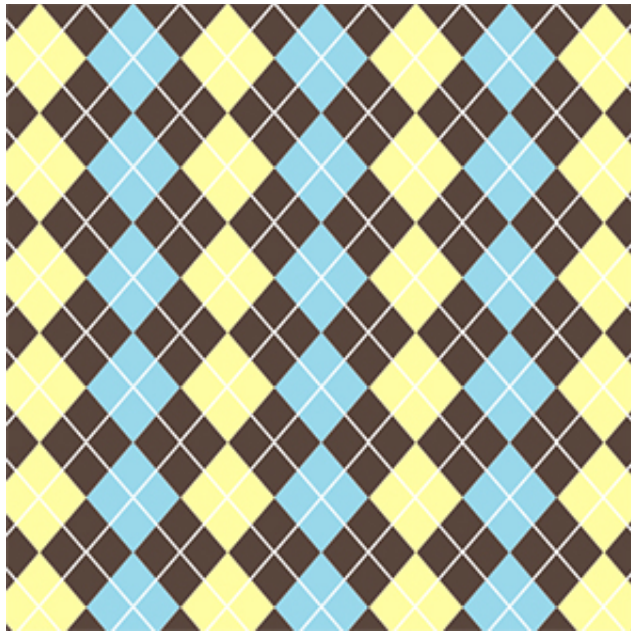
11. Study the image below. What is the image from?



- a fashion magazine ad from the 1960's
- a fashion magazine ad from the 1970's
- a set of patterns to make dresses from an old sears catalog
- an online add for women's dresses

(1 point)

12. Which pattern is represented in the following image? **Herringbone** (1 point)



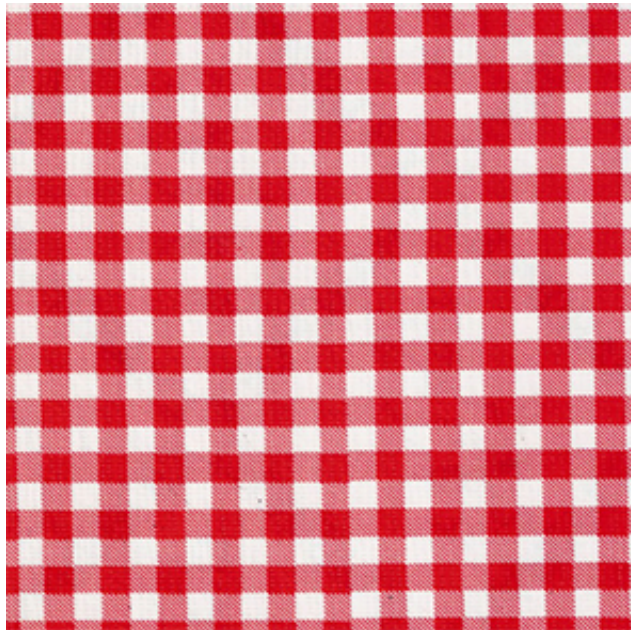
- Herringbone
- Hound's Tooth
- Striped
- Argyle**
- Paisley



13. In fashion design what is a Portfolio Flat? (1 point)

- An organization of colors to create harmony and mood in a collection
- A specific type of drawing used to show details of a clothing design
- A drawing that shows the variety options and styles within a collection
- A blank croquis

14. What pattern is represented in the image below? **Argyle** (1 point)



- Argyle
- Paisley
- Herringbone
- Hound's Tooth
- Gingham**



15. A millinery is someone who designs (1 point)

- hats
- shoes
- umbrellas
- bags and purses
- belts and accessories

16. Study the image of the dress below.

What fashion designer created this dress? **Karl Lagerfeld** (1 point)

Ralph Lauren

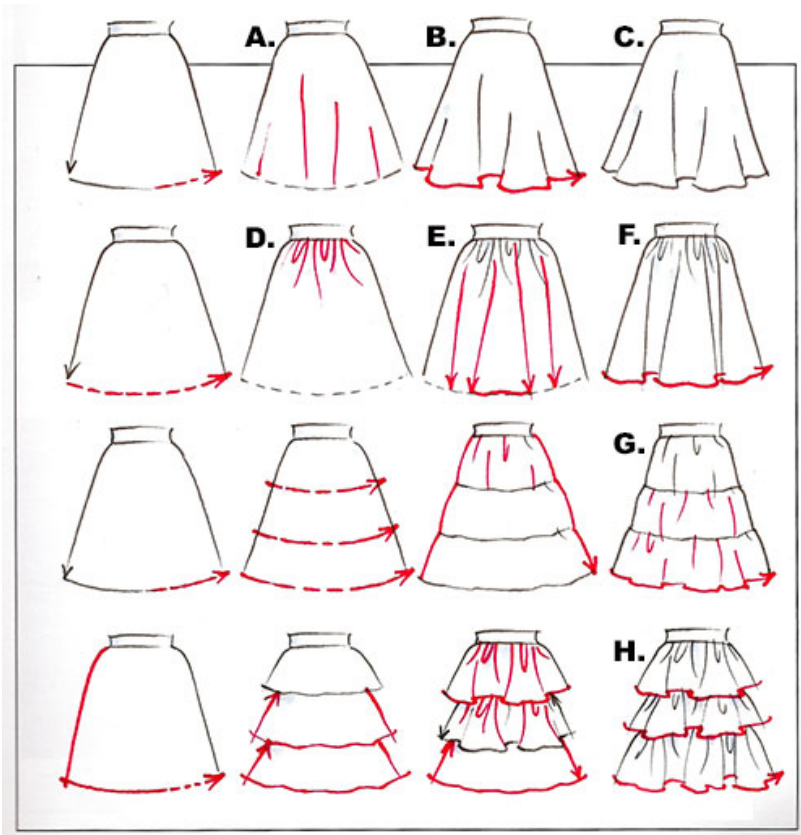
Dona Karen

**Coco Chanel**

Louis Vuitton



17. From the image below, identify the type of skirt: Skirt G is called a **tiered skirt** (1 point)



- tiered skirt
- gathered skirt
- layered skirt
- straight skirt
- flared skirt

18. In fashion design what does the term Flat refer to? (1 point)

- A sketch of a figure to design cloths onto
- A drawing of several fashion figures together in different poses
- A drawing of a Croquis with a fashion design
- A drawing of clothing laid flat to show details of the garment

19. What is a Stylized Fashion Figure? (1 point)

- A figure in a variety of poses
- A figure with realistic proportions
- An elongated figure
- A figure combined with flats



20. Using your knowledge of fashion design  
what is the name of the garment depicted below?

- a petticoat
- a 1920's swimsuit
- a bodice
- a bustle
- a corset**

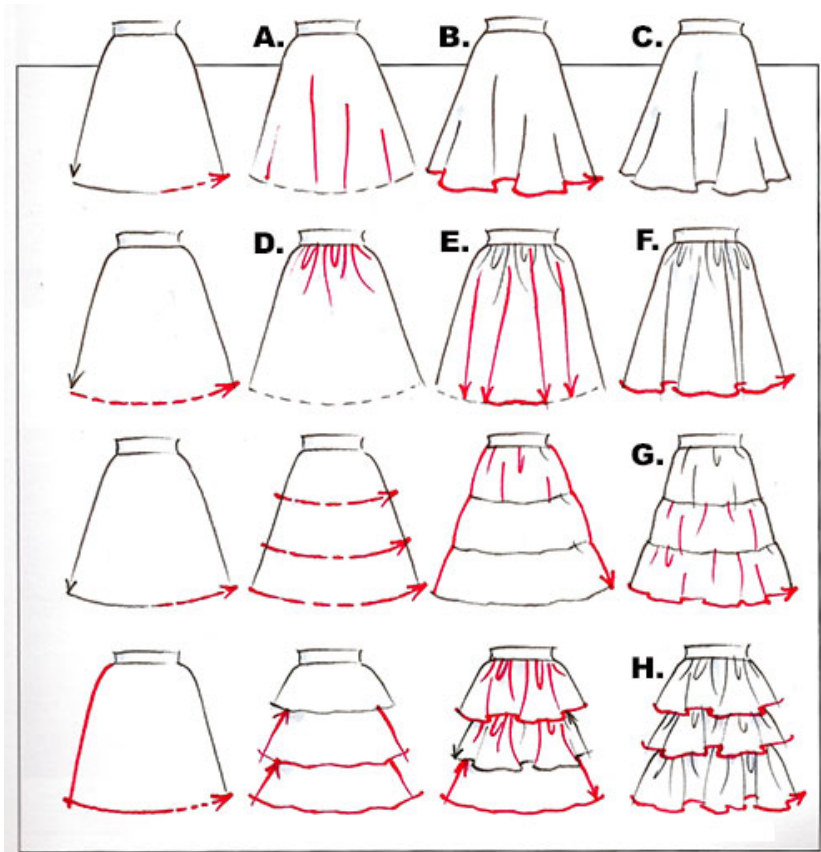
(1 point)



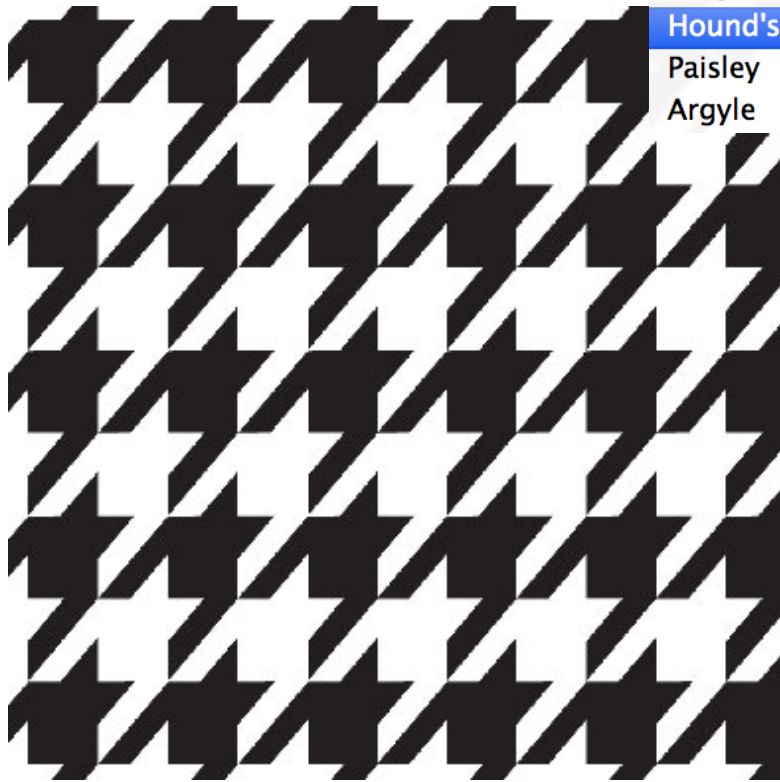
21. In the image below, the elements highlighted in red on skirt D are called

- folds
- gathers**
- seams
- hemlines
- tiers

(1 point)

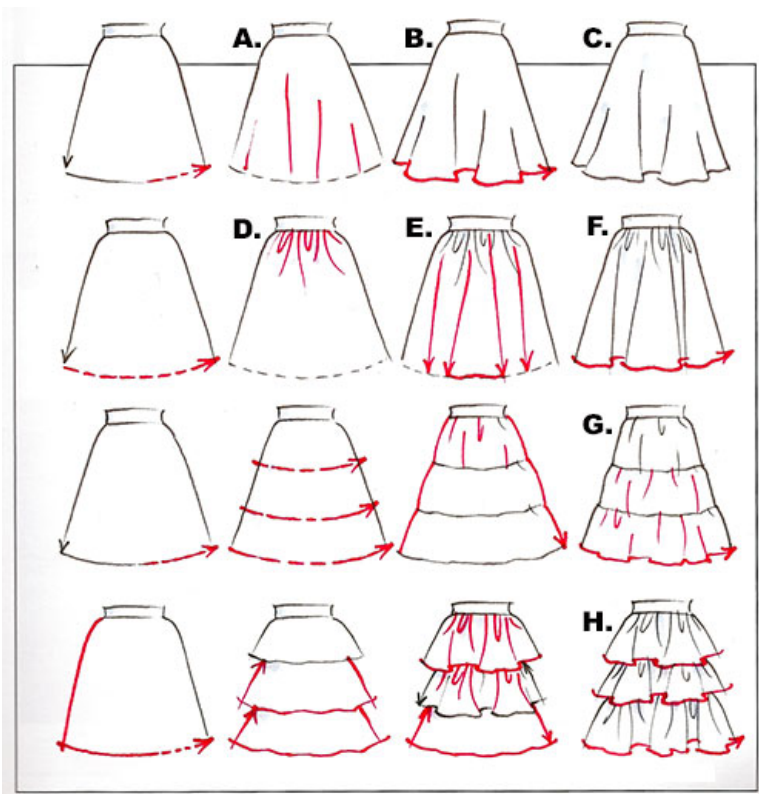


22. What pattern is represented in the image below? **Herringbone** (1 point)



- Gingham
- Hound's Tooth**
- Paisley
- Argyle

23. From the image below, identify the type of skirt: Skirt C is called a **tiered skirt** (1 point)



- tiered skirt**
- gathered skirt
- layered skirt
- straight skirt
- flared skirt

24. Study the magazine advertisement below.

What time period do you think best matches the design in the advertisement?

- late 1950's (1 point)  
early 1960's  
1970's  
late 1980's  
early 1990's



25. What is a figure drawing? (1 point)

- A drawing of an object
- A drawing of several objects under direct light
- A template of the design to cut fabric from
- A drawing of a person